

User manual

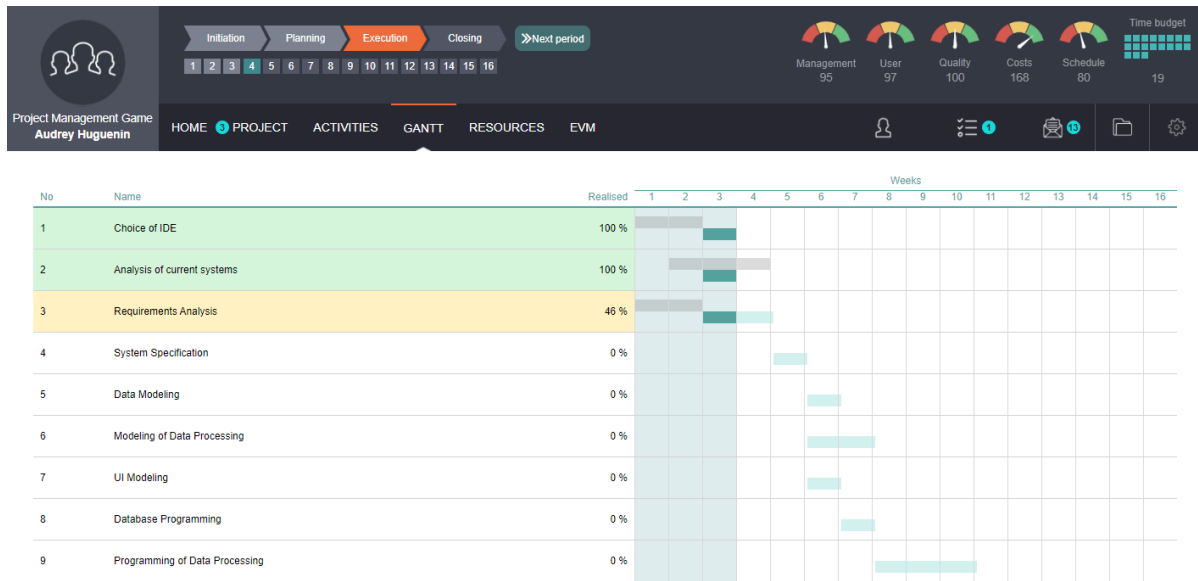
# Execution

*Manual resources reservation*

*V3.1 – March 2023*

## Monitor project progress

You can monitor project progress on the tracking Gantt chart.



## Manage Resources

At the beginning of each period, depending upon project progress or other events, you can change resources reservation and activities assignment.

### Warning

Resources perform activities depending on activities priority order and as soon as possible (even if before Gantt chart)

There is no automatic booking of resources. As project manager you have to inform resources on when you need them. For example, if an activity is behind schedule and if you want a resource to go on working on the project for another week, you need to reserve this resource for another period (click on the corresponding period in the Resources Gantt).

### Learning curve

If a resource joins an already running system (activity-force team), then it might have to catch up before it begins to be effective.

## FAQ (Frequently Asked Questions)

### How does a Resource from one activity to another

---

When a resource completes an activity (e.g. if the activity is completed or the work related to his profession is done), it goes on to the next activity according to the order of priorities. If no other activity is assigned, the resource will leave the project and not charge wages anymore.

### What determines the progress of an activity?

---

When a team is working on an activity, work progress depends on many factors. These factors are obviously the number of workers and their qualifications. But work performance and quality also depend on the skills and motivations of resources.

If several professions are required to complete an activity (e.g. software engineers and secretaries), then it is sometimes possible that one profession partially or entirely takes over the workload of another (the software engineer may do secretary's job if such a job is needed to complete the activity). Sometimes they will be somewhat less efficient, sometimes they will do the same job as a specialist, however, for a congruently higher salary. In some cases, it is not possible for a profession to do the job of another (e.g. the secretary might not be able to do the job of the software engineer). In these cases, the activity can't be completed until a software engineer is assigned.

If an activity is not completed yet, then it is sometimes possible to nonetheless start the subsequent activity (e.g. writing a report can start even if you do not have all the necessary information yet). However, progress could be less than if preceding activities were finished.

### How are calculated wages charged to the project?

---

Wages are allocated to activities as soon as the project members begin their work on it. Wages are charged depending of the corresponding activity rate.

For example:

- wage at 100%: 8'000

- Activity rate: 80%

- period: week

=>  $8'000 * 80\% * 1/4 = 1'600$  per period.

If a resource finished its work on an activity in the middle of a period, it may either go the next activity assigned or leave the project and will not charge wages to the project anymore.

### Why might the project quality be different from the average activity quality?

---

The quality of the project depends much on the quality of the individual activities. However, the project quality also depends on further factors. For example, it is possible that each activity is of high quality, but that, due to inappropriate Choices and Actions, the activities do not correspond to customer's expectations

## What influences the Quality Indicator?

---

The quality of the activities and of the project depends on a whole set of factors such as the choices you have made, the level of competence and motivation of the team performing the activity, as well as the Quality Analysis Actions performed.

## Can I do a Quality Analysis on a completed activity?

---

Yes, it is possible to perform a quality analysis on an activity that has just been completed. This will allow you to discover the last errors and prevent them from spreading to other activities.